



Solenoid valve 2/2 way Normally Close With pilot control - Latching coils NBR = Buna, EPDM, FKM = Viton

21W3KB190
21W7KB500
Latching coils

PRESENTATION:

S.V. with pilot control for interception of fluids compatible with the construction materials.

Opening is obtained by a 50 msec pulse, and closing by another 50 msec pulse, with reversed polarity.

A minimum operational pressure of 0,2 bar is required.

The materials used and the tests carried out ensure maximum reliability and duration.

USE: Automation
Heating

PIPES: G 3/4 - G 2

COILS: BDA2X006LS 155°C(class F)
BDA2X009LS 155°C(class F)
BDA2X012LS 155°C(class F)
BDA05009LS 155°C(class F)
BDA05012LS 155°C(class F)
BDA05024LS 155°C(class F)

**COIL HOUSING AND COIL FORMER MATERIAL ARE
MADE BY 100% VIRGIN MATERIAL.**

Max. allowable pressure (PS)

G 3/4 - G 1

25 bar

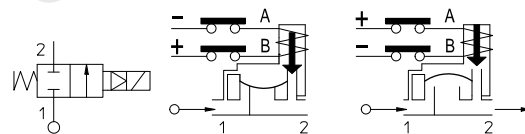
G 1 1/4 - G 2

16 bar

Ambient temperature:

See coils catalogue page for its compatibility.

Gaskets	Temperature	Medium
B =NBR (nitrile rubber)	- 10°C +90°C	Air, inert gas, water
E =EPDM (ethylene-propylene)	- 10°C +140°C	Water, low pressure steam
V =FKM (fluoroelastomer)	- 10°C + 140°C	Mineral oils (2°E), gasoline gas oil



For seals other than NBR replace the letter "B" with the ones corresponding to the other seals. E.I. 21W3KV190.

Pipe ISO 228/1	Code	Coils code	Voltages VDC	Max viscosity		Ø mm	Kv l/mn	Power watt	Pressure		
				cSt	°E				min bar	M.O.P.D. DC bar	
			G 3/4 and G 1	21W3KB190 and 21W4KB250	BDA2X006LS	6	12	~ 2	19	140	2,5
BDA2X009LS	9										
BDA2X012LS	12										
BDA05009LS	9	12			~ 2	25	190	5	10		
BDA05012LS	12										
BDA05024LS	24										
G 1 1/4 and G 1 1/2 and G 2	21W5KB350 e 21W6KB400 and 21W7KB500	BDA2X006LS	6	12	~ 2	35	400	2,5		10	
		BDA2X009LS	9								
		BDA2X012LS	12			40	520	5			
		BDA05009LS	9	12	~ 2				50		750
		BDA05012LS	12								
		BDA05024LS	24								

Note

Available on request and with minimum quantities.



CE Approval

(Pressure Equipment Directive 2014/68/EU)

for S.V. 21W5÷21W7

MATERIALS:

Body	Brass - UNI EN 12165 CW617N
Armature tube	Stainless steel AISI series 300
Fixed core	Stainless steel AISI series 400
Plunger	Stainless steel AISI series 400
Phase displacement ring	Copper - Cu 99,9%
Spring	Stainless steel AISI series 300
Shutter	Standard: B=NBR On request: E=EPDM V=FKM
Orifice	Brass - UNI EN 12165 CW617N

On request:

Connector

Connector conformity

Pg 9 or Pg 11

ISO 4400

FEATURES:

Electrical conformity
Protection degree

IEC 335
IP 65 EN 60529 (DIN 40050)
with coil fitted by connector.

SPARE PARTS:

- Coil:**
BDA2X006LS
BDA2X009LS
BDA2X012LS
BDA05009LS
BDA05012LS
BDA05024LS
- Complete plunger:**
Code R450898/B
- Complete armature tube:**
Code R450606
- Gasket O-Ring:**
G 3/4 - G 1 Code R990002/B
G 1 1/4 - G 1 1/2 Code R990005/B
- Complete diaphragm:**
G 2 Cod. R990081/B
G 3/4-G 1 Code R450431/B
G 1 1/4 - G 1 1/2 Code R450466/B
G 2 Code R450432/B

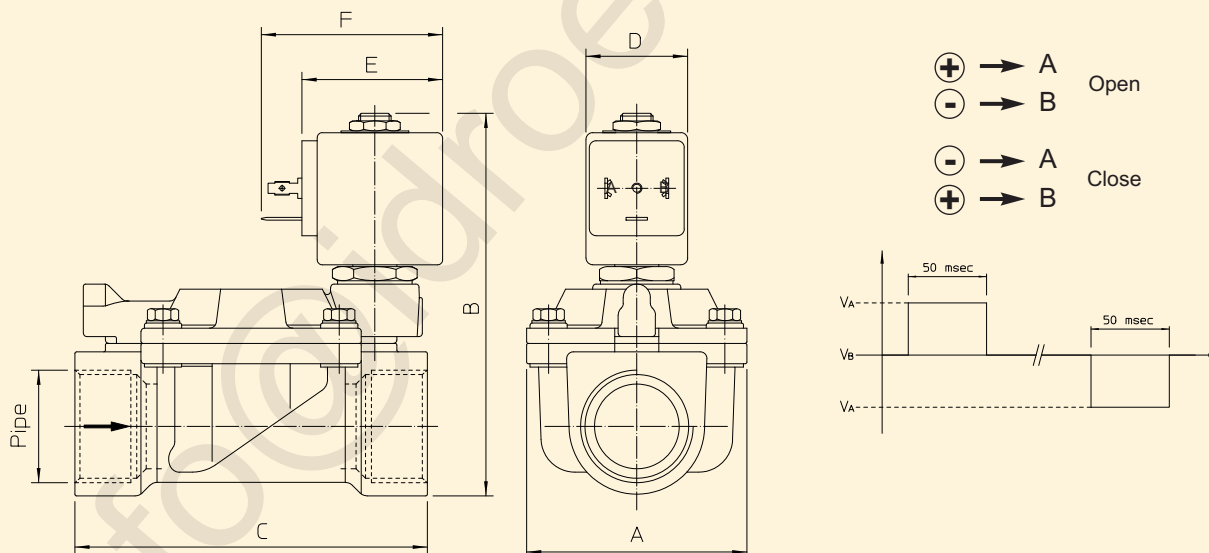
KIT:

KT130KB55-A=2+3

MAINTENANCE KIT:

KTG0W3KB19=2+4+5

DIMENSIONS:



Type	Pipe ISO 228/1	A mm	B mm	C mm	D mm	E mm	F mm
21W3K B 190	G 3/4	65	105	104	30	42	54
21W4K B 250	G 1		112				
21W5K B 350	G 1 1/4	98	125	144			
21W6K B 400	G 1 1/2						
21W7K B 500	G 2	118	141	172			